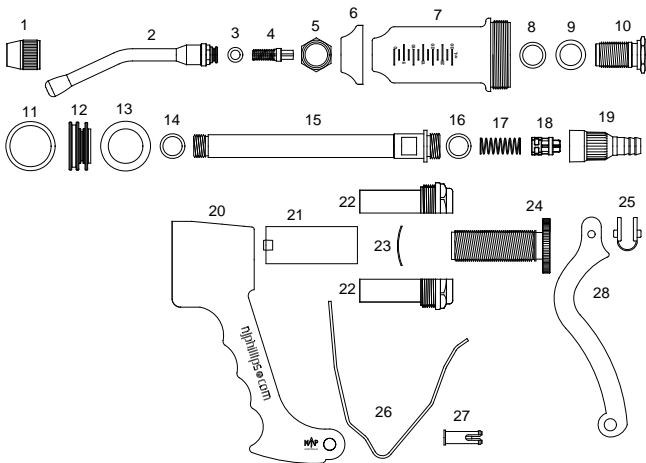




- New HFV technology for faster refill and chemical resistance.
- Compatible with most drenches on the market.
- New style piston provides easy assembly and service.
- Variable dose settings.
- New hex locating nozzle.
- Service kit compatible with new and previous model.



PARTS BREAKDOWN



- | | |
|------------------------------------|---|
| 1. Nozzle Lock Nut (SN99) | 16. Inlet Adaptor Seal Ring (SP176) |
| 2. Sheep Nozzle (SXN240) | 17. Inlet Valve Spring (SP285-A) |
| 3. Nozzle Seal Ring (SP1) | 18. Inlet Valve (SH1446/C4) |
| 4. Delivery Valve Assembly (WX291) | 19. Inlet Adaptor (SH314) |
| 5. Delivery Cage Lock Nut (SN5) | 20. Handle (SH1074) |
| 6. Cylinder Shield Cap (SN153) | 21. Dose Adjustor Sleeve (SH250) |
| 7. Cylinder (SH943) | 22. Body Plug (SH272) |
| 8. Nozzle Nut Seal Ring (SP176) | 23. Dose Adjustor Washer Spring (SP197) |
| 9. Delivery Cage Seal Ring (SP98) | 24. Dose Adjustor (SH273) |
| 10. Delivery Cage (SN542) | 25. Lever Pads (SP1210) |
| 11. Piston O-ring (SP751) | 26. Return Spring (SP287) |
| 12. Piston (SH1217) | 27. Lever Pin (SH200) |
| 13. Lubricating Washer (SF1) | 28. Lever (SH198/G4) |
| 14. Piston Seal Ring (SP176) | |
| 15. Push Rod (SH201) | |

MODEL	DOSE RANGE	INCREMENTS
30ml	2.5ml – 30ml	2.5ml

KIT NO.	PART NAME	PART NO.
WX1328	Minor Service Kit	3,4,8,9,11,12,13,17,18.
WX1329	Major Service Kit	3,4,7,8,9,11,12,13,14,16,17,18,25.
WX1647	Injection Attachment Kit	Not shown.

PLEASE ORDER BY KIT AND PART NAME



Customise this instrument with your brand colour and logo. Contact us for details.



njphillips.com
Our expertise is in your hands.

LOCKED BAG 8, GOSFORD NSW, AUSTRALIA 2250

P +61 2 4340 2044 F +61 2 4340 1991 | E njp1@njphillips.com.au